



Custom Finishing Kit

HELPFUL HINTS AND SUGGESTIONS

For:

•PineCar® Racer™ •SailBoat Racer™ •Space Derby Rockets.

Read all Hints and Instructions before proceeding.

1. Technique for applying Sealer/Paint (not for Gloss Finish).
 - a. Brush on heavy coat of paint with foam applicator.
 - b. Dip applicator in clean water.
 - c. Brush on "water coat" over wet paint coat (this will thin the surface of the paint coat, causing the brush marks to flow into a smooth surface. Don't use so much water that it runs.).
2. Sealer/Paint and Gloss Finish can be thinned and cleaned up with water. If you have a spill, clean it up before it dries.
3. Thoroughly wash applicator with water after each coat of Sealer/Paint or Gloss Finish. **DO NOT ALLOW SEALER/PAINT OR GLOSS FINISH TO DRY IN APPLICATOR.**
4. Mix Sealer/Paint and Gloss Finish by stirring it. **DO NOT SHAKE.** Shaking will cause bubbles.
5. Apply Sealer/Paint and Gloss Finish in a dust-free area only.
6. If Sealer/Paint or Gloss Finish becomes too thick, a few drops of water will thin it to the proper consistency.
7. A common problem in painting is over-brushing. The fewer the brush strokes, the better the finish looks.
8. A stand (for painting and drying) can be made by driving three nails through a block of wood (Fig. 2).
9. Paper towels and a small container of water should be handy when painting. Covering the work area with newspaper is a good idea.

10. Sealer/Paint and Gloss Finish must dry between coats. Drying times will vary depending on temperature, humidity and film thickness. Sealer/Paint and Gloss Finish usually dry in 15 to 30 minutes.

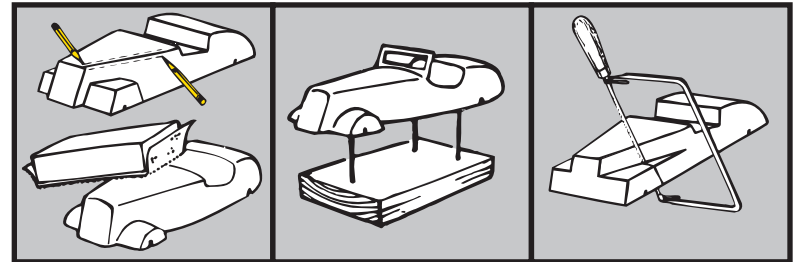
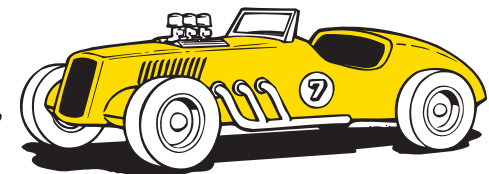
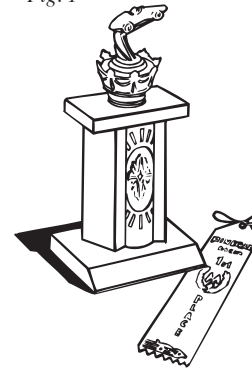


Fig. 1

Fig. 2

Fig. 3



PINECAR® CUSTOM FINISHING KIT CONTENTS:

Sealer/Paint
Gloss Finish
Paint Applicator

Sanding Block
Fine, Medium, Coarse Sandpaper
Detailed Instructions

See PineCar® Racer™ Weights, Hob-E-Lube® Graphite, Axle Polishing Kits, Decals, Custom Parts, Pre-Cut Designs and PineCar® Racer™ Premium Kits at your local hobby store.



Custom Finishing Kit

INSTRUCTIONS

READ ENTIRE INSTRUCTIONS AND HELPFUL HINTS
BEFORE PROCEEDING.

SHAPE CAR BODY

Rough out the shape of your car body by following the instructions in the car kit. If you have a PineCar® Racer™ Pre-cut Design, you can make it unique by changing the shape to your own design.

To make body changes such as rounding fenders, hoods, etc., draw a pattern line on each side. Remove the wood between the pattern lines by sanding with the coarse sandpaper and the sanding block (Fig. 1). If you want to remove large amounts of wood, use a coping saw or a band saw with ADULT SUPERVISION (Fig. 3).

PREPARATION OF WOOD FOR PAINTING

After the car body is shaped, sand it smooth with coarse sandpaper, removing all of the rough areas and saw marks.

Sand the entire car with medium sandpaper, removing all of the sanding marks left by the coarse sandpaper and make all surfaces of the car equally smooth. Finally, sand the entire car with the fine sandpaper, removing all sanding marks left by the medium sandpaper (these are almost invisible). Again, make all surfaces of the car equally smooth. Wipe the sanding dust off of the car.

APPLY SEALER/PAINT (stir before using)

PineCar® Sealer/Paint is a combination sanding sealer and paint. It will seal and fill the wood, adding color to the car at the same time. Apply a coat of Sealer/Paint to the entire car with the paint applicator (Hint #1). Wash applicator with water after each use (Hint #3). Allow Sealer/Paint to dry thoroughly (Hint #10).

Using fine sandpaper, lightly sand the painted surface to remove brush marks and to make the surface super smooth (it will probably be necessary to sand through the paint exposing the wood in a few places).

Apply one or two more coats of Sealer/Paint to the car. Sand lightly between coats if necessary. After you achieve a good uniform coat of paint, apply one final light coat of paint but do not sand.

APPLY GLOSS FINISH (stir before using)

PineCar® Gloss Finish was formulated to add a high gloss finish to your car and to protect it from soil and fingerprints due to handling.

Wipe off any dust on car and apply a heavy coat of Gloss Finish, avoiding runs. Use long, flowing brush strokes (as few as possible), allowing Gloss Finish to flow out to an even coat. The flowing action will eliminate brush strokes. Allow to dry thoroughly (Hint #10). Wash applicator (Hint #3).

If the Gloss Finish did not flow out while drying, it can be thinned with a few drops of water. If the Gloss Finish has small blemishes, such as dust specks, they can be removed by sanding lightly with fine sandpaper. Sand very lightly or the sandpaper will gum up.

Each additional coat of Gloss Finish will minimize brush marks and blemishes, creating a deeper, smoother finish. Apply a second and third coat of Gloss Finish using long, flowing brush strokes and allowing Gloss Finish to flow out to a smooth surface.

ADD DETAILS

After Gloss Finish has completely dried, details such as decals, custom parts and detail painting can be applied if desired. If you want to add detail painting (like windows or stripes), use a fast drying, water-based paint and a fine artist's brush. It is suggested to seal over PineCar® Decals with a final light coated of Gloss Finish.

PineCar®, P.O. Box 98, Linn Creek, MO 65052